



Nantucket Memorial Airport

Passenger Enplanements FY2014 vs. FY2015

| FY2015 | AIRLINE | CY 2014 | | | | | | CY 2015 | | | | | | TOTAL | |
|--------|------------------------------------|---------|--------|--------|--------|---------|--------|---------|--------|--------|--------|--------|-----|-------|---------|
| | | JUL | AUG | SEP | OCT | NOV | DEC | JAN | FEB | MAR | APR | MAY | JUN | | |
| | Cape Air (KAP) | 7,305 | 7,557 | 5,117 | 3,098 | 1,619 | 1,639 | 912 | | | | | | | 27,247 |
| | Piedmont/United | 2,511 | 2,980 | 1,449 | Closed | Closed | Closed | Closed | Closed | Closed | Closed | Closed | | | 6,940 |
| | Continental Connection (Comut air) | Closed | Closed | Closed | Closed | Closed | Closed | Closed | Closed | Closed | Closed | Closed | | | |
| | Delta Express (Freedom Air) | Closed | Closed | Closed | Closed | Closed | Closed | Closed | Closed | Closed | Closed | Closed | | | |
| | Delta Airlines | 3,564 | 4,453 | 195 | Closed | Closed | Closed | Closed | Closed | Closed | Closed | Closed | | | 8,212 |
| | Island Air (ISA) | 5,573 | 5,507 | 4,901 | 4,424 | 3,578 | 4,028 | 2,311 | | | | | | | 30,322 |
| | JetBlue Airways | 7,736 | 9,036 | 4,500 | 1,649 | Closed | Closed | Closed | Closed | Closed | Closed | | | | 22,921 |
| | Nantucket Air (ACK) | 2,715 | 2,667 | 2,388 | 2,188 | 1,392 | 1,338 | 1,004 | | | | | | | 13,692 |
| | Tradewind Aviation | 1,030 | 1,078 | 566 | 202 | 101 | 147 | 6 | | | | | | | 3,130 |
| | USAirways (Air Wisconsin - AWI) | 1,851 | 2,225 | 131 | Closed | Closed | Closed | Closed | Closed | Closed | Closed | Closed | | | 4,207 |
| | Monthly Total | 32,285 | 35,503 | 19,247 | 11,561 | 6,690 | 7,152 | 4,233 | | | | | | | 116,671 |
| | % Change Prior Year | 0.86% | -0.71% | -5.33% | -8.72% | -13.31% | -5.07% | -10.47% | | | | | | | |

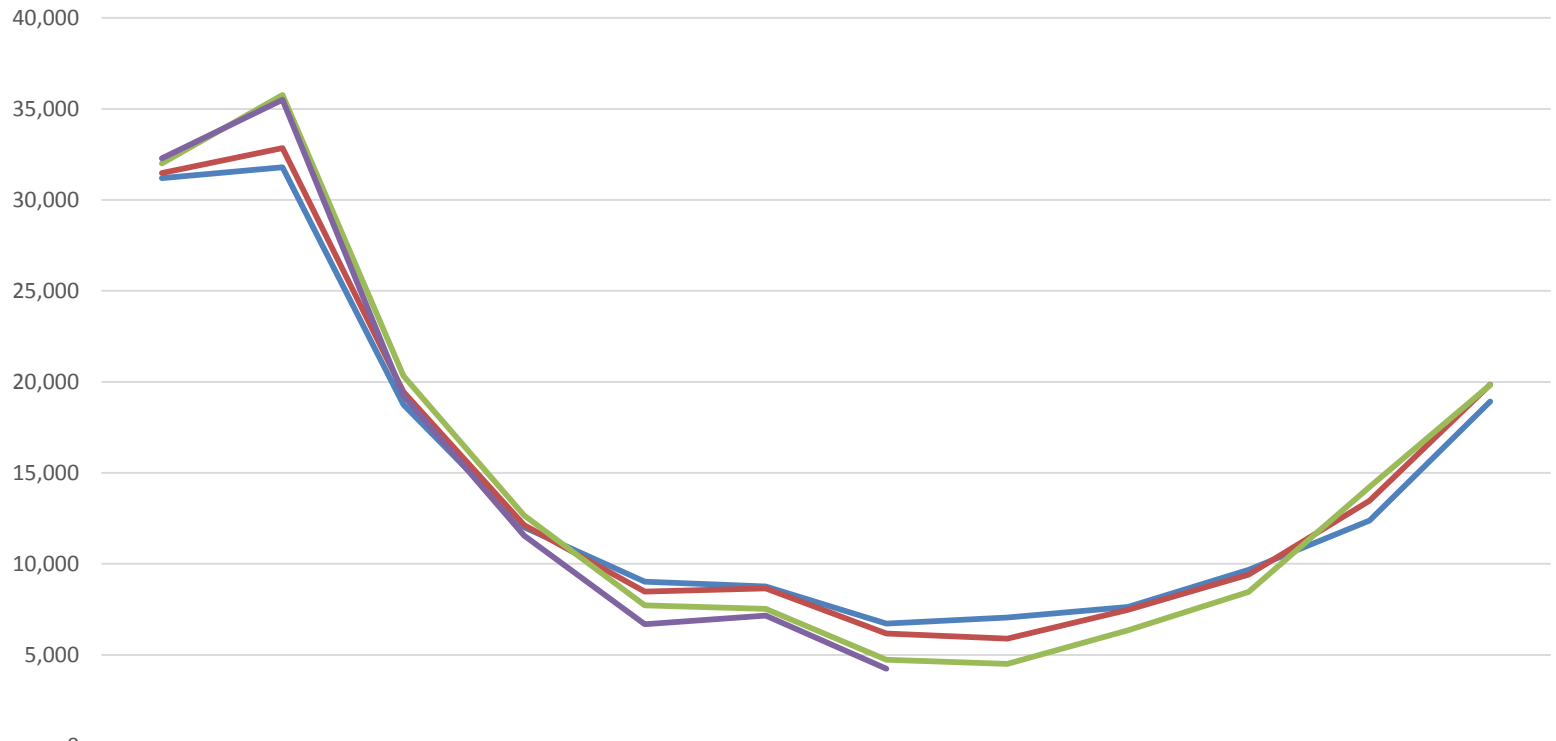
January 2014 vs. January 2015 down - 10.47%
YTD Down - 3.37%

| | JUL | AUG | SEP | OCT | NOV | DEC | JAN | TOTAL | % Change |
|----------------------|--------|--------|--------|--------|-------|-------|-------|---------|----------|
| Enplanements FY 2012 | 31,199 | 31,788 | 18,744 | 12,012 | 9,029 | 8,752 | 6,729 | 118,253 | |
| Enplanements FY 2013 | 31,484 | 32,852 | 19,449 | 12,130 | 8,476 | 8,647 | 6,183 | 119,221 | 0.82% |
| Enplanements FY 2014 | 32,009 | 35,758 | 20,330 | 12,665 | 7,717 | 7,534 | 4,728 | 120,741 | 1.27% |
| Enplanements FY 2015 | 32,285 | 35,503 | 19,247 | 11,561 | 6,690 | 7,152 | 4,233 | 116,671 | -3.37% |



Nantucket Memorial Airport

Passenger Enplanements FY 2012-2015



| | JUL | AUG | SEP | OCT | NOV | DEC | JAN | FEB | MAR | APR | MAY | JUN |
|----------------------|--------|--------|--------|--------|-------|-------|-------|-------|-------|-------|--------|--------|
| Enplanements FY 2012 | 31,199 | 31,788 | 18,744 | 12,012 | 9,029 | 8,752 | 6,729 | 7,047 | 7,627 | 9,674 | 12,381 | 18,924 |
| Enplanements FY 2013 | 31,484 | 32,852 | 19,449 | 12,130 | 8,476 | 8,647 | 6,183 | 5,893 | 7,481 | 9,407 | 13,479 | 19,847 |
| Enplanements FY 2014 | 32,009 | 35,758 | 20,330 | 12,665 | 7,717 | 7,534 | 4,728 | 4,506 | 6,358 | 8,453 | 14,230 | 19,841 |
| Enplanements FY 2015 | 32,285 | 35,503 | 19,247 | 11,561 | 6,690 | 7,152 | 4,233 | | | | | |